

Barrett & Brummel

Farm and Commercial Real Estate
825 East Lincoln • Chenoa, Illinois

Pontiac Farm

Pontiac Township

Livingston County, IL

Price: \$683,700 / \$12,900 per gross acre

Size

53 acres +/-

Location

Farm is located in Pontiac IL, next to the Motorola subdivision and across the road from the Pontiac CAT plant.

Improvements

There are no improvements on the farm.

Taxes

\$929.46 / \$17.54 per acre

Ownership

The sellers are seeking a cash sale for this farm.

Comments

This is a nice farm in a great location, and next door to development. City water and sewer nearby.

For additional information about this property, please contact:

Mark Brummel

Barrett & Brummel - Farm/Commercial

Cellular: (815) 674-3006

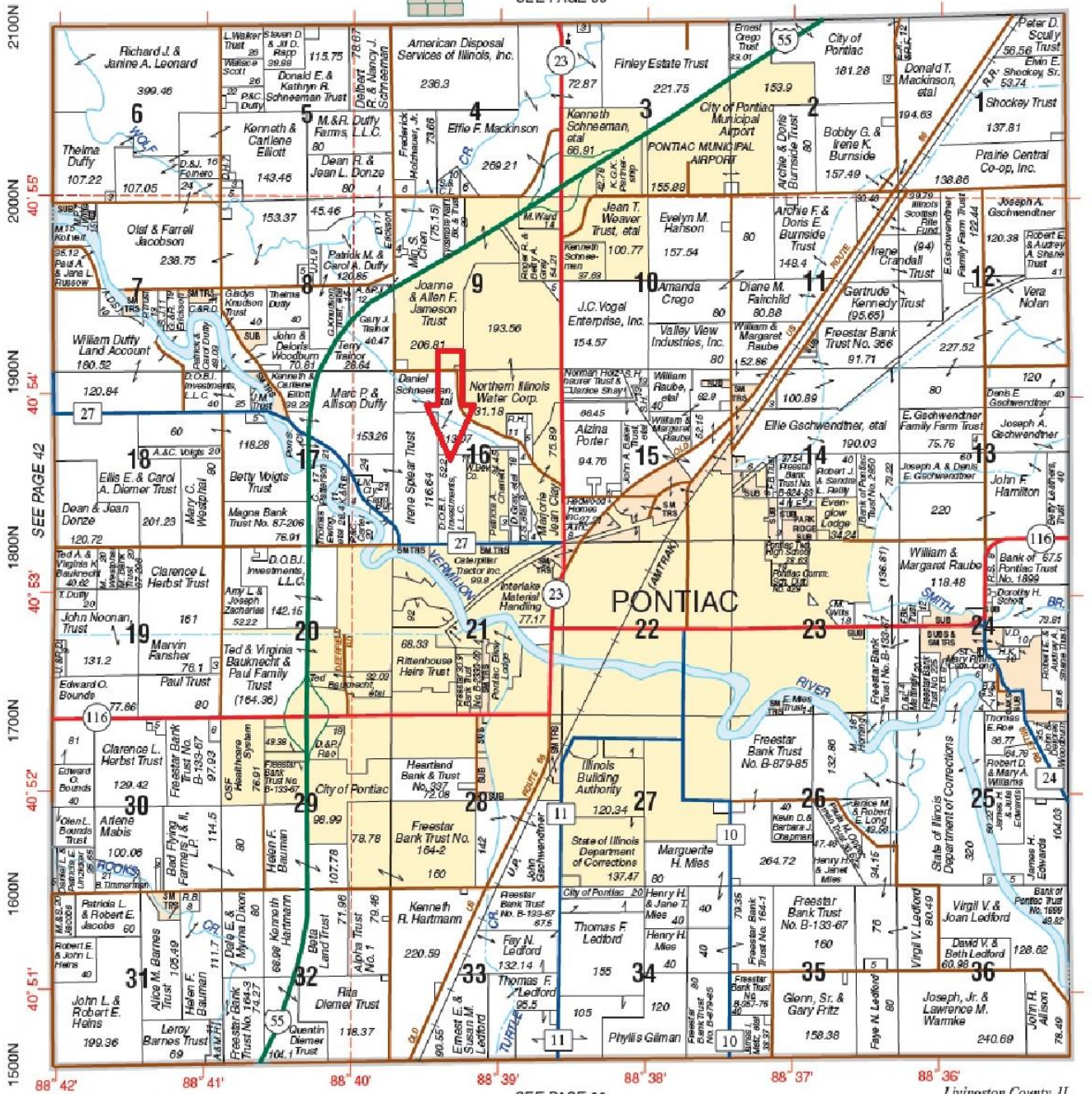
Bill Barrett (815) 341-4044

Email: mjbrummel@yahoo.com

PONTIAC

T.28N.-R.5E.

SEE PAGE 60



2100N
2000N
1900N
1800N
1700N
1600N
1500N

40° 55'
40° 54'
40° 53'
40° 52'
40° 51'

SEE PAGE 46

© 2010 Rockford Map Publs., Inc.

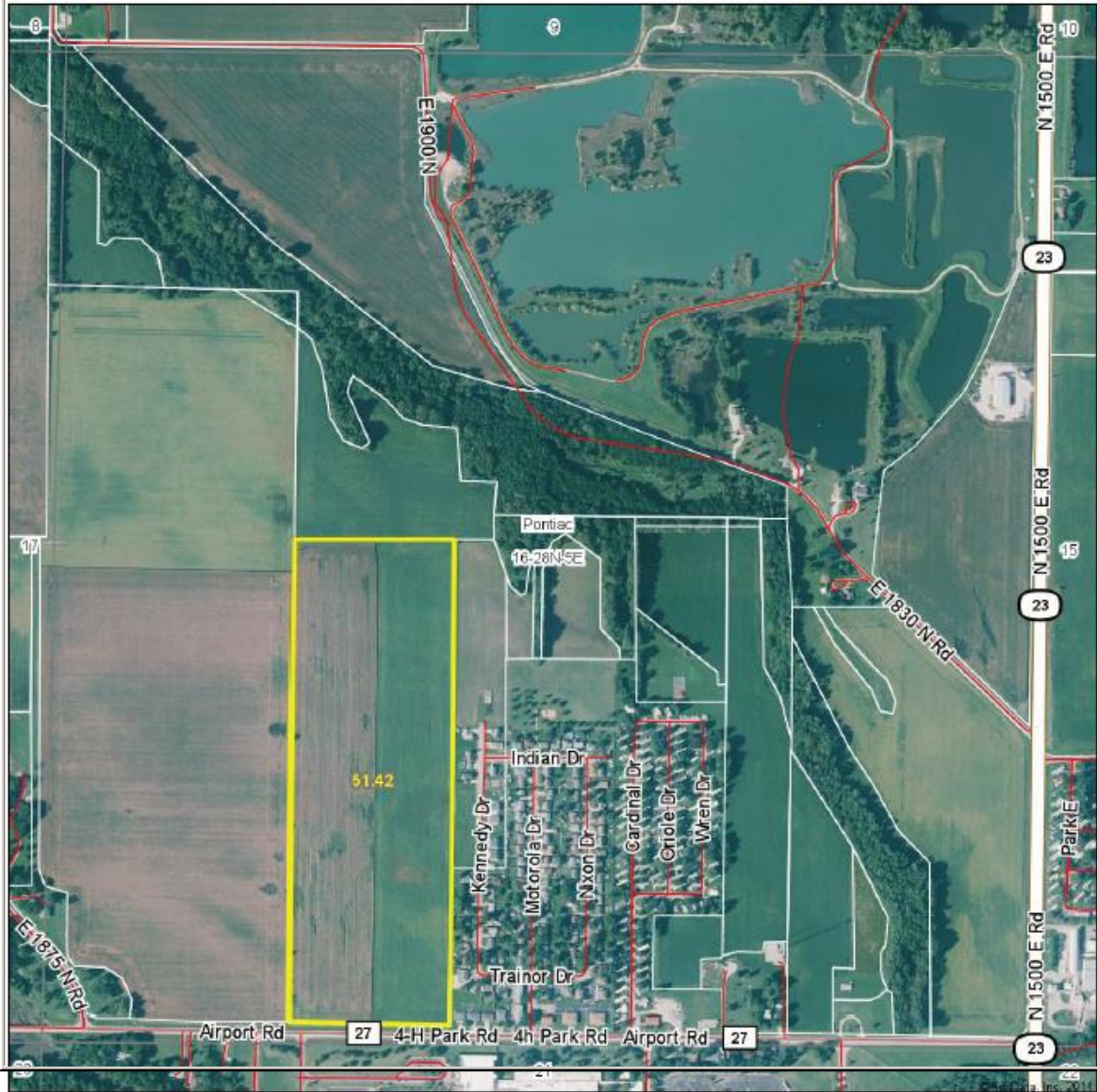
SEE PAGE 28

1200E 1300E 1400E 1500E 1600E 1700E 1800E

88° 42' 88° 41' 88° 40' 88° 39' 88° 38' 88° 37' 88° 36'

Livingston County, IL

Aerial Map

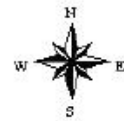


Maps Provided By:

CUSTOMER ONLINE MAPPING
© AgriData, inc. 2014 www.AgrDataInc.com

map center: 40° 53' 43.3, 88° 39' 8.58

scale: 9601



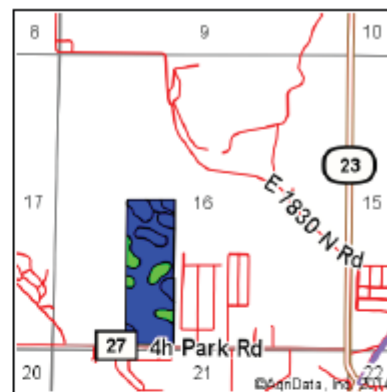
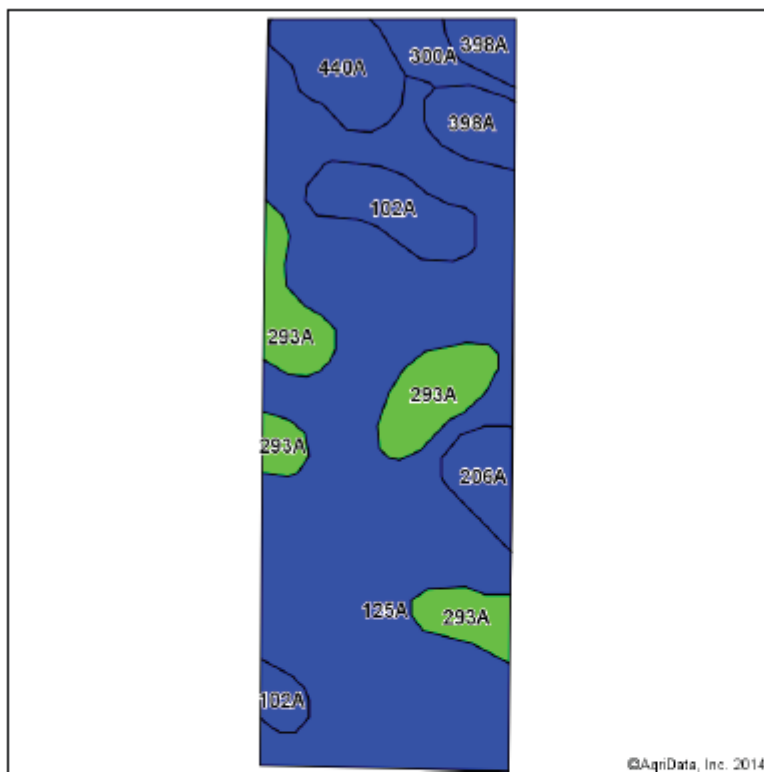
12/7/2014

16-28N-5E
Livingston County
Illinois

Mark Brummel
Barrett & Brummel - Farm/Commercial

Cellular: (815) 674-3006

Soil Map



State: Illinois
County: Livingston
Location: 16-28N-5E
Township: Pontiac
Acres: 51.42
Date: 12/7/2014



Maps Provided By:



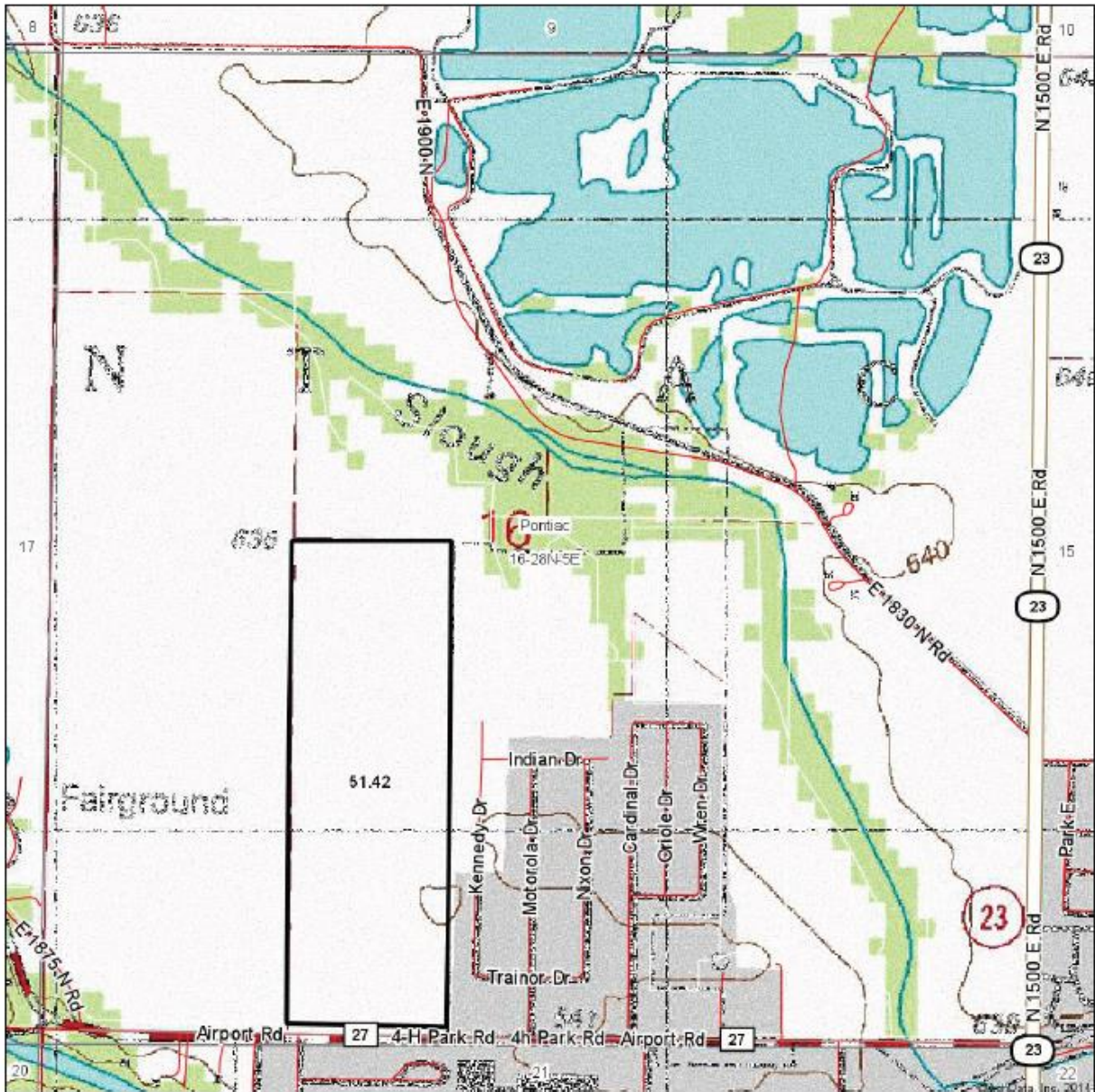
Soils data provided by USDA and NRCS.

Area Symbol: IL105, Soil Area Version: 8

Code	Soil Description	Acres	Percent of field	II. State Productivity Index Legend	Subsoil rooting a	Corn Bu/A	Soybeans Bu/A	Wheat Bu/A	Oats Bu/A b	Crop productivity index for optimum management
125A	Selma loam, 0 to 2 percent slopes	33.35	64.9%		FAV	176	57	70	90	129
293A	Andres silt loam, 0 to 2 percent slopes	6.16	12.0%		FAV	184	59	71	97	135
102A	La Hogue loam, 0 to 2 percent slopes	3.41	6.6%		FAV	162	52	71	80	121
440A	Jasper loam, 0 to 2 percent slopes	2.95	5.7%		FAV	175	57	71	94	130
398A	Wea loam, 0 to 2 percent slopes	2.59	5.0%		FAV	176	55	69	93	130
206A	Thorp silt loam, 0 to 2 percent slopes	1.62	3.2%		FAV	170	55	66	88	126
300A	Westland clay loam, 0 to 2 percent slopes	1.34	2.6%		FAV	164	53	63	84	121
Weighted Average						175.5	56.6	69.3	90.3	129

Mark Brummel
Barrett & Brummel - Farm/Commercial
 Cellular: (815) 674-3006
 Email: mjbrummel@yahoo.com

Topography Map

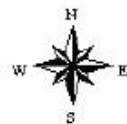


Maps Provided By:
surety
CUSTOMIZED ONLINE MAPPING
© AgriData, Inc. 2014 www.AgrIDataInc.com

16-28N-5E
Livingston County
Illinois

map center: 40° 53' 43.3, 88° 39' 8.58

scale: 9601



12/7/2014

Mark Brummel
Barrett & Brummel - Farm/Commercial
Cellular: (815) 674-3006
Email: mjbrummel@yahoo.com

^{i i i} This farm is offered by Barrett Realty, information is believed accurate but not warranted.
