

# *Barrett & Brummel*

*Farm and Commercial Real Estate*  
825 East Lincoln • Chenoa, Illinois

## **Bell Road Farm**

**Seward Township**

**Kendall County, IL**

**Price: \$1,755,600 / \$16,500 per gross acre**

### **Size**

106.4 acres +/-

### **Location**

This farm is located approximately 7 miles west of Joliet / Shorewood area, and approximately 1 mile south of Rt 52 on Brisbon Road.

### **Improvements**

There is a brick ranch home, along with a heated shop with concrete floor, a Morton Building and other outbuildings.

### **Taxes**

\$6,051.26

### **Ownership**

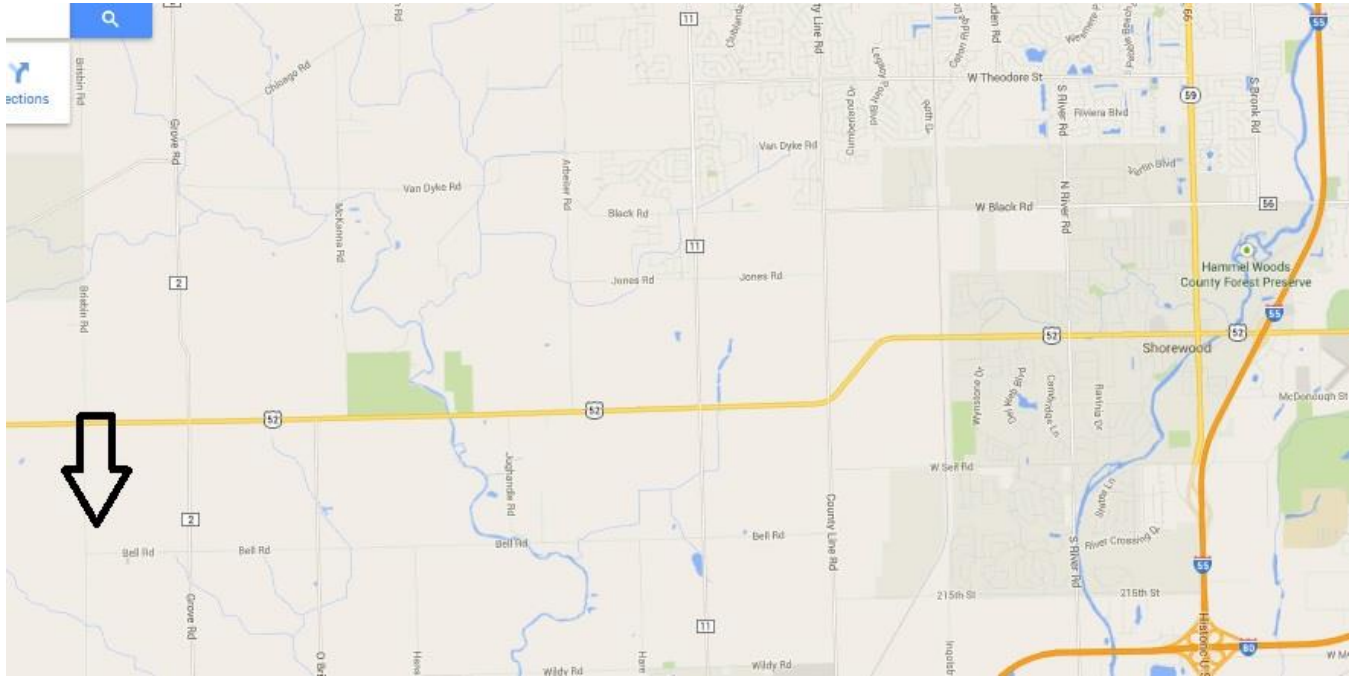
The sellers are seeking a cash sale for this farm.

### **Comments**

This is a nice farm in a great location.

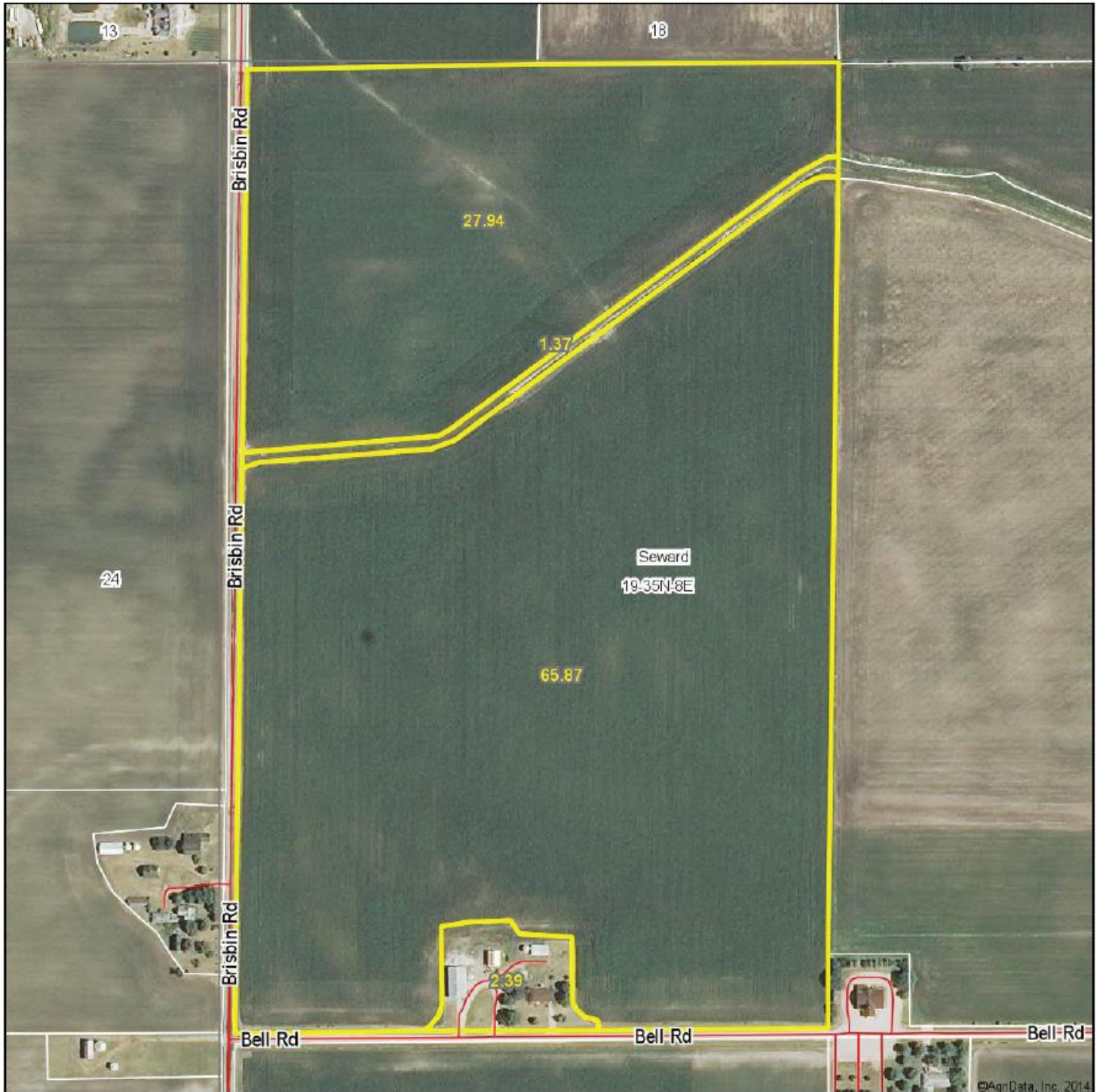
For additional information about this property, please contact:

**Mark Brummel**  
**Barrett & Brummel - Farm/Commercial**  
Cellular: (815) 674-3006  
Bill Barrett (815) 341-  
4044





# Aerial Map



©AgriData, Inc. 2014

THOUSANDS OF ACRES SOLD  
**Barrett & Brummel**  
Farmland & Commercial Real Estate  
MARK J. BRUMMEL  
Owner  
Mobile: 618-576-2666  
Office: 618-542-2800  
Website: [www.barrettbrummel.com](http://www.barrettbrummel.com)  
Email: [mjbrummel@pb.com](mailto:mjbrummel@pb.com)

Maps Provided By:  
 **surety**  
CUSTOMIZED ONLINE MAPPING  
© AgriData, Inc. 2014 [www.AgriDataInc.com](http://www.AgriDataInc.com)

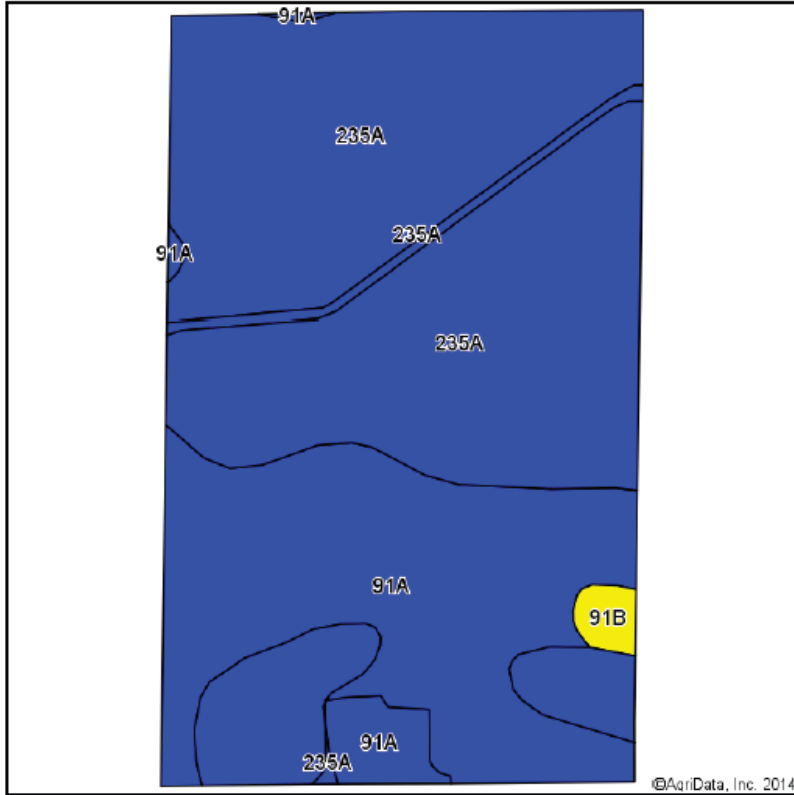
map center: 41° 30' 1.99, 88° 21' 44.94  
scale: 4879

**19-35N-8E**  
**Kendall County**  
**Illinois**

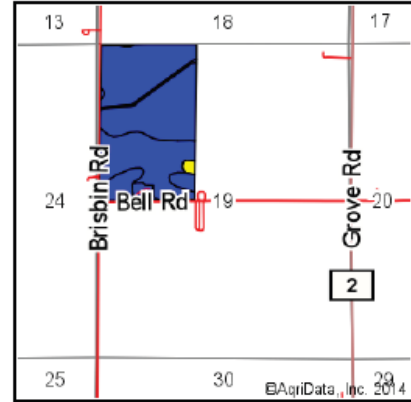


11/23/2014

## Soil Map



Soils data provided by USDA and NRCS.



State: **Illinois**  
 County: **Kendall**  
 Location: **19-35N-8E**  
 Township: **Seward**  
 Acres: **97.57**  
 Date: **11/23/2014**



Maps Provided By:

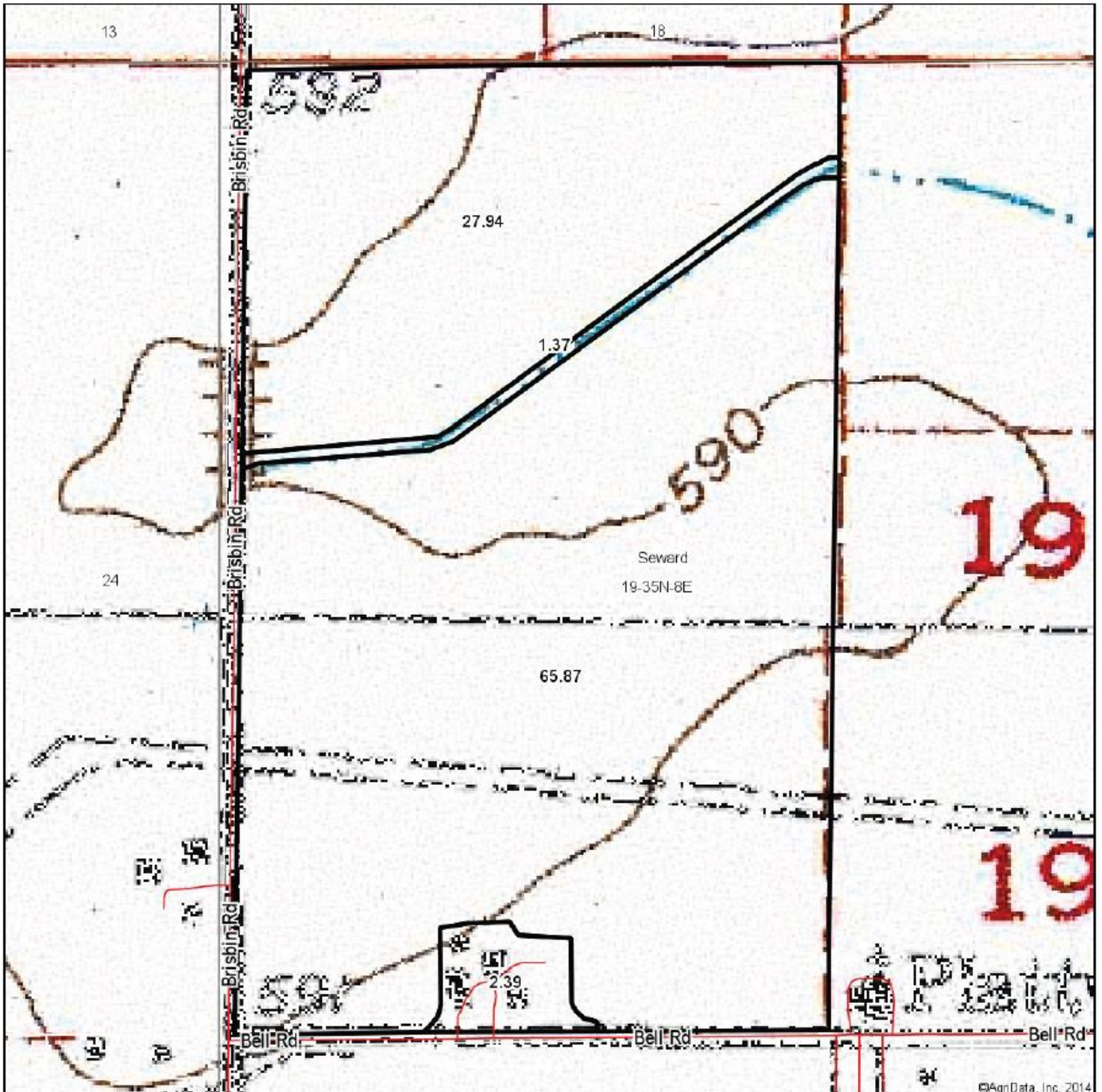


Area Symbol: IL093, Soil Area Version: 10

Code	Soil Description	Acres	Percent of field	Il. State Productivity Index Legend	Subsoil rooting <i>a</i>	Corn Bu/A	Soybeans Bu/A	Wheat Bu/A	Oats Bu/A <i>b</i>	Crop productivity index for optimum management
235A	Bryce silty clay, 0 to 2 percent slopes	65.09	66.7%		FAV	162	54	64	82	121
91A	Swygert silty clay loam, 0 to 2 percent slopes	31.48	32.3%		UNF	158	52	63	79	118
**91B	Swygert silty clay loam, 2 to 4 percent slopes	1.00	1.0%		UNF	**156	**51	**62	**78	**117
<b>Weighted Average</b>						<b>160.6</b>	<b>53.3</b>	<b>63.7</b>	<b>81</b>	<b>120</b>

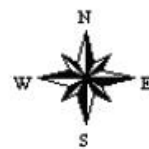
**Mark Brummel**  
**Barrett & Brummel - Farm/Commercial**  
 Cellular: (815) 674-3006

# Topography Map



map center: 41° 30' 1.99, 88° 21' 44.94

scale: 4879



11/23/2014



Maps Provided By:



**19-35N-8E**  
**Kendall County**  
**Illinois**

**Mark Brummel**  
**Barrett & Brummel - Farm/Commercial**  
Cellular: (815) 674-3006  
Email: [mjbrummel@yahoo.com](mailto:mjbrummel@yahoo.com)

<sup>i i i</sup> This farm is offered by Barrett Realty, information is believed accurate but not warranted.

---