

# *Barrett & Brummel*

*Farm and Commercial Real Estate*  
960 East Cemetery • Chenoa, Illinois

## **Brisbon Road 10 acre lots**

**Seward Township**

**Kendall County, IL**

**Price: \$15,000/acre**

### **Size**

This farm is broken in four 10 acre +/- lots with frontage on Brisbon Road.

### **Location**

Farm and lots are located just south of Rt 52 on Brisbon Road, west of Shorewood IL

### **Improvements**

There are no improvements on this farm.

### **Taxes**

\$400.14 total on whole farm.

### **Ownership**

The sellers are seeking a cash sale for this farm. The farm is currently leased for 2014

### **Comments**

This is great farm in a great location. \*\* Agent Interest.

For additional information about this property, please contact:

**Mark Brummel**  
**Barrett & Brummel - Farm/Commercial**

Cellular: (815) 674-3006

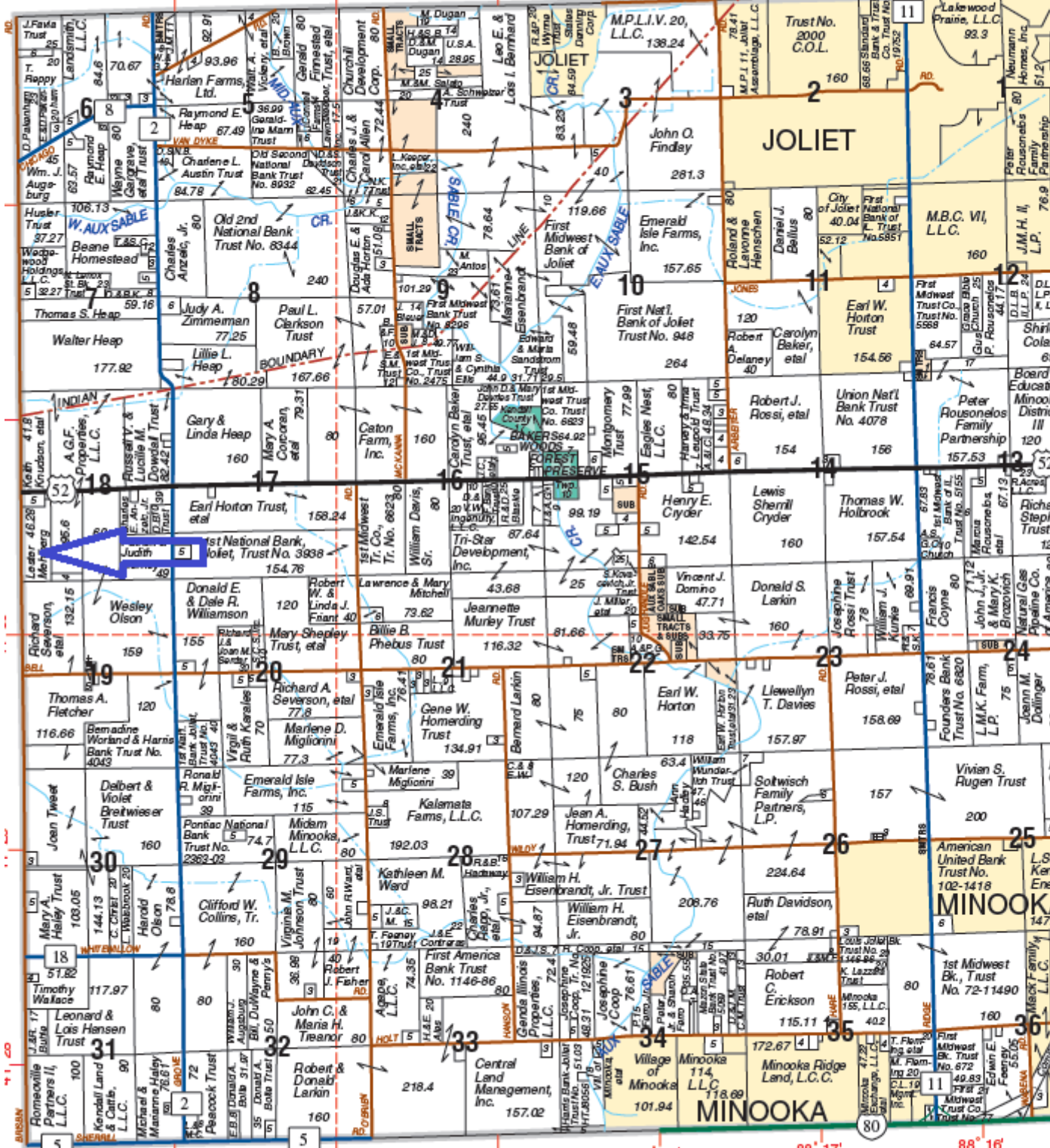
Office: (815) 945-2000

Email: [mjbrummel@yahoo.com](mailto:mjbrummel@yahoo.com)

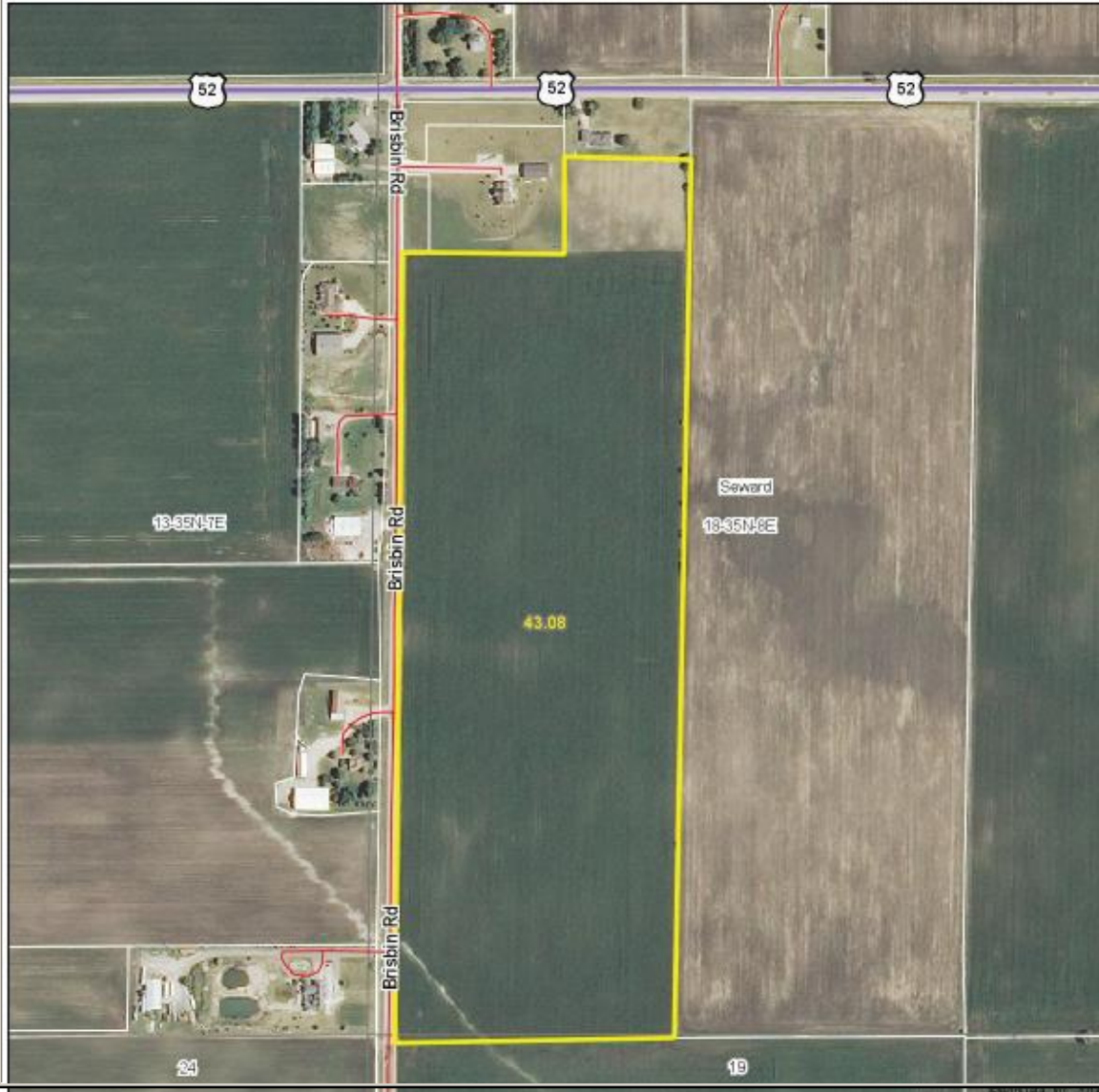
# SEWARD

# T.35N.-R.8

NA-AU-SAY TWP. SEE PAGE 19



Aerial Map

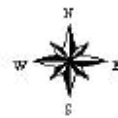


Maps Provided By:  
**surety**  
AGRIUSA, INC. 2014 www.AgrUSAinc.com

18-35N-8E  
Kendall County  
Illinois

map center: 41° 30' 28.58, 88° 21' 50.27

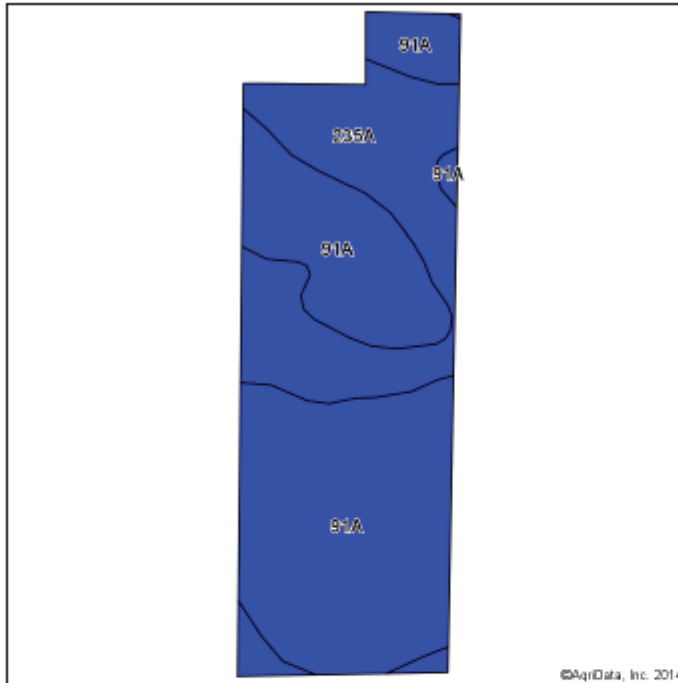
scale: 5083



3/14/2014

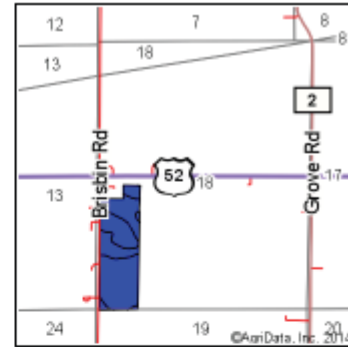
**Mark Brummel**  
**Barrett & Brummel - Farm/Commercial**  
Cellular: (815) 674-3006

## Soil Map



Soils data provided by USDA and NRCS.

©AgriData, Inc. 2014



State: **Illinois**  
 County: **Kendall**  
 Location: **18-35N-8E**  
 Township: **Seward**  
 Acres: **43.08**  
 Date: **3/14/2014**



Maps Provided By:



Area Symbol: IL093, Soil Area Version: 9

Code	Soil Description	Acres	Percent of field	Ill. State Productivity Index Legend	Subsoil rooting #	Com Bu/A	Soybeans Bu/A	Wheat Bu/A	Oats Bu/A <sup>b</sup>	Crop productivity index for optimum management
91A	Swygart silty clay loam, 0 to 2 percent slopes	28.83	66.9%		UNF	158	52	63	79	118
235A	Bryce silty clay, 0 to 2 percent slopes	14.25	33.1%		FAV	162	54	64	82	121
<b>Weighted Average</b>						<b>159.3</b>	<b>52.7</b>	<b>63.3</b>	<b>80</b>	<b>119</b>

Area Symbol: IL093, Soil Area Version: 9

Table: Optimum Crop Productivity Ratings for Illinois Soil by K.R. Olson and J.M. Lang, Office of Research, ACES, University of Illinois at Champaign-Urbana. Version: 1/2/2012 Amended Table S2 B811 (Updated 1/10/2012)  
 Crop yields and productivity indices for optimum management (B811) are maintained at the following NRES web site: <http://soilproductivity.nres.illinois.edu/>  
 \*\* Indexes adjusted for slope and erosion according to Bulletin 811 Table S3  
<sup>a</sup> UNF = unfavorable; FAV = favorable  
<sup>b</sup> Soils in the southern region were not rated for oats and are shown with a zero "0".

Field borders provided by Farm Service Agency as of 5/21/2006. Aerial photography provided by Aerial Photography Field Office.

**Mark Brummel**  
**Barrett & Brummel - Farm/Commercial**

Cellular: (815) 674-3006  
 Office: (815) 945-2000  
 Email: [mjbrummel@yahoo.com](mailto:mjbrummel@yahoo.com)

**Mark Brummel**  
**Barrett & Brummel - Farm/Commercial**  
Cellular: (815) 674-3006  
Office: (815) 945-2000  
Email: [mjbrummel@yahoo.com](mailto:mjbrummel@yahoo.com)

<sup>i i i</sup> This farm is offered by Barrett Realty, information is believed accurate but not warranted.

---